

**Progress Monitoring Report  
on the delivery of  
SW Regional Skills Partnership Priorities**

*Report to*

**South West RSP**

**June 2008**

## KEY POINTS

### 1. Leadership & Management Skills

The number of HEFCE funded students studying Business & Administrative studies programmes was static from 2005/6 to 2006/7.

The proportion of all South West students studying these subjects fell during the last year, continuing a pattern seen since 2002/03. Nationally the proportion studying these subjects has risen over this period, though the South West did start from a higher base.

Business & Administrative Students as a % of all students, 2002/03 to 2006/07

Institution	2002/03	2005/06	2006/07
South West	13.5%	12.5%	12.3%
National Total	10.6%	10.7%	10.8%

Regional institutions seeing a fall in numbers over the last year were Bournemouth University, the University of Gloucestershire and University of the West of England.

*The SW RSP is invited to consider whether it wishes to examine the reasons for the decline in numbers at these institutions.*

### 2. Enterprise Skills

#### VAT Registrations

2006 saw 15,745 new VAT registrations in the South West. This is no higher than 2002 with 15,550 new registrations.

The South West is the region with the lowest rate of new VAT registrations. Registrations, measured as a % of business stock, were 8.8% in 2006, against a national average of 9.7%.

However, business survival rates in the South West are high. Comparatively low levels of VAT de-registrations within the region resulted in a positive net change in the VAT registered business stock of +2%, only slightly behind the national figure of +2.1%. This was better than the previous year, which saw a net change of +1.8% in the South West, against a national rise of +2.1%.

*This data supports the importance of a focus on Enterprise Skills as a priority for the South West RSP*

#### Expenditure on Research & Development

Regional R&D expenditure by businesses in 2006 amounted to £1,316 million. This was a 9.6% rise on 2005, a rate of growth that compares favourably to the national growth rate of 6.7% over the same period.

### **3. Innovation & Creativity**

#### **HE STEM applications & acceptances**

During 2007 there were 8,349 more applications for STEM subject places made to SW Higher Education Institutions than in 2006. The number of STEM applications received by SW applications grew 21.3% from 2002-2007, faster than the growth in applications for all subjects of 17.2%. In the same period the number of STEM acceptances rose by 18.1%, roughly in line with the 17.7% growth rate in acceptances for all subjects.

*Although not conclusive, this data suggests that demand for STEM places at SW HEIs may be rising faster than their supply. This should be examined further by the SW STEM Project Steering Group, as it may have implications for the focus of activities funded under the RSP STEM initiative.*

While there has been an 18.1% rise in all STEM acceptances since 2002 this is not shared across all subjects. Engineering acceptances have risen only 2.5%, while acceptances for Mathematical and Computer Sciences have fallen 15.1%.

*It is suggested that the STEM Initiative should consider focusing on specific subjects and that this data should form part of that consideration.*

### **4. Young people not in Education, employment or training (NEET)**

5.5% of young people in the region were NEET in 2007, a figure lower than the England average (6.7%) and the regional figure for the previous year (6.0%). The proportion of all young people whose destinations were 'Not known', who are thought to be frequently NEET, fell from 3.6% in 2006 to 3.3% in 2007.

# Contents

## 1 Introduction

### 1.1 Context

## 2 Leadership & Management Skills

2.1 Participation in Business & Administrative studies programmes at South West HEIs, 2002/03 – 2005/06

2.2 Qualifications obtained from South West HEIs in Business, Management & related programmes in Higher Education

## 3 Enterprise Skills

3.1 Business start-up rates

3.2 Expenditure on Research and Development

## 4. Creativity and Innovation Skills

4.1 HE – Applications for STEM subject places HE

4.2 HE – Acceptances to STEM subjects at HE

4.3 HE – Number of students studying STEM subjects

4.4 HE – Achievements in STEM subjects

## 5 Higher Level Skills

5.1 Foundation Degrees - Achievements & Participation

## 6 Sub-Priorities

6.1 Young people not in employment, education or training (NEETs)

## 1 Introduction

### 1.1 Context

The report provides an update on the indicators selected to monitor regional progress on the 4 main priorities and 3 'sub-priorities' identified by the Regional Skills Partnership (RSP).

It should be noted that this paper only reports on trends emerging from new data released in the last six months, since the release of the benchmark report. This new data is mainly HEFCE data. It relates to only a few of the indicators selected by the RSP as suggestive of progress against the RSP priorities.

#### SW RSP Priorities

- Leadership & Management Skills;
- Enterprise Skills;
- Creativity and Innovation Skills, including Science, Technology, Engineering & Maths (STEM) skills;
- Ensuring skills needs of the regional economy, and in key sectors, are addressed at Level 3 and above.

#### Sub-Priorities

- Supporting strategies for the integration of migrant workers;
- Supporting the development of integrated information, advice and guidance service;
- Supporting strategies for the reduction of NEETS.

## 2 Leadership & Management Skills

### 2.1 Participation in Business & Administrative studies programmes at South West HEIs, 2002/03 – 2005/06

Table 1 shows that regional participation in Business & Administrative programmes in 2006/7 was 1.6% higher than in 2002/03.

Growth from 2005/06 to 2006/07 was static, though the proportion of Business and Administrative studies students as a percentage of all students fell from 12.5% to 12.3%, due to growth in the overall student cohort.

**Table 1: Student Numbers in Business & Administrative studies at South West HEIs, 2002/03 to 2005/06**

Year	Student Numbers	Business & Admin as % of all students
2002/03	18,800	13.5%
2003/04	19,920	13.5%
2004/05	18,655	12.6%
2005/06	19,090	12.5%
2006/07	19,105	12.3%
% change 02/03 – 06/07	1.6%	-1.2%
% change 05/06 – 06/07	0.0%	-0.2%

Source: HESA

The proportion of the student cohort that studied Business and Administrative Studies in 2006/07 was greater in the South West than nationally – 12.3% against 10.8%. However this percentage has been falling in the region, while nationally there is a pattern of very gradual growth.

**Table 2: Business & Administrative Students as a percentage of all students, South West & Nationally, 2002/03 to 2006/07**

Institution	2002/03	2005/06	2006/07	Change from 2002/03	Change from 2005/06
South West	13.5%	12.5%	12.3%	-1.2%	-0.2%
National Total	10.6%	10.7%	10.8%	0.2%	0.1%

Source: HESA

Looking at the region's HEIs individually, there has been no consistent pattern of growth or decline in the past year or since 2002/3. The number of Business and Administrative Studies students declined at the Universities of Bournemouth, Gloucestershire and UWE.

**Table 3: Student Numbers in Business & Administrative studies by South West HEI, 2002/03 to 2005/06**

Institution	2005/06	2006/07	Change from 2005/06	% change from 2002/03
Bath Spa University	235	245	10	-15.5%
The University of Bath	2,130	2,335	205	34.2%
The Arts Institute at Bournemouth	60	75	15	7.1%
Bournemouth University	4,870	4,760	-110	1.6%
The University of Bristol	475	455	-20	5.8%
Dartington College of Arts	0	0	0	-
The University of Exeter	1,115	1,160	45	33.3%
University College Falmouth	25	30	5	50.0%
University of Gloucestershire	2,225	1,995	-230	-23.1%
The University of Plymouth	3,725	3,845	120	32.8%
Royal Agricultural College	465	560	95	83.6%
College of St Mark and St John	75	55	-20	-93.5%
University of the West of England	3,690	3,590	-100	-11.5%
<b>South West</b>	<b>19,090</b>	<b>19,105</b>	<b>15</b>	<b>1.6%</b>
National Total	251,100	255,905	4805	10.6%

Source: HESA

Nationally the number of Business and Administrative Studies students grew by 10.6% from 2002/03 to 2006/07 while the South West has experienced only 1.6% growth.

In the last year the growth in Business & Administrative Studies student numbers was 1.88% nationally. In the South West numbers were effectively static, showing 0.08% growth.

Table 3 shows that Business and Administrative studies are more significant in some South West HEIs than others, with Bournemouth University, the Universities of Bath and Gloucestershire and the Royal Agricultural College having the highest proportions of business students. Gains within some institutions, such as University of Bath, have been offset by decline at others, such as the Universities of Gloucestershire and Bournemouth.

**Table 3: Business & Administrative Students as a percentage of all students, by South West HEI, 2002/03 to 2006/07**

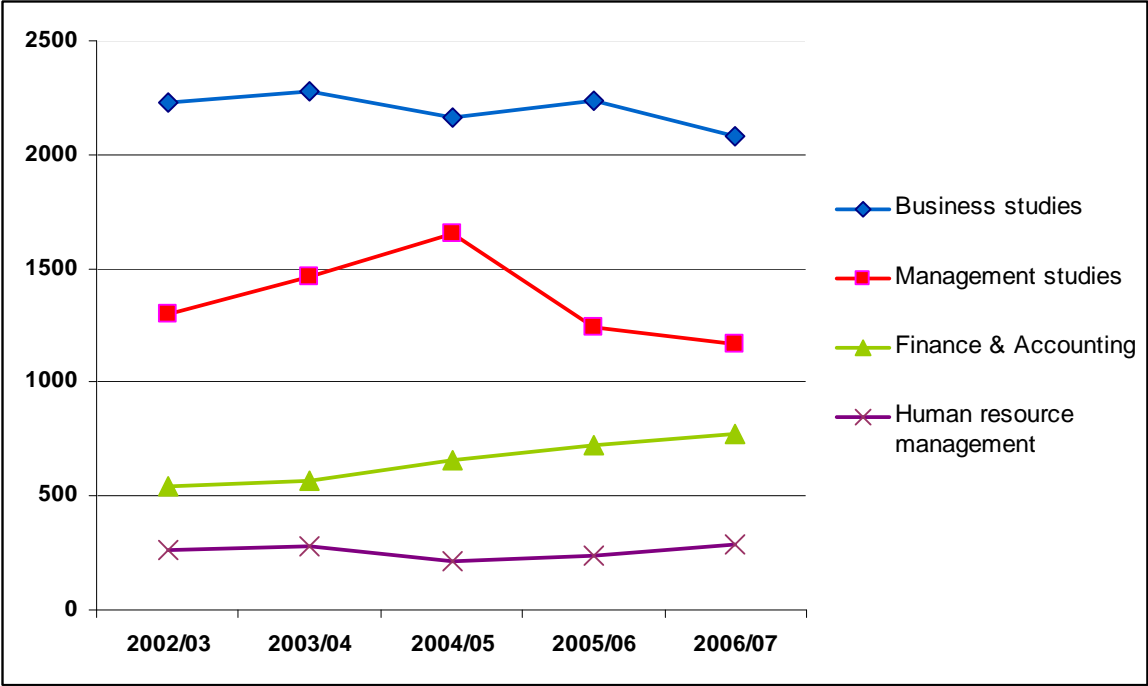
<b>Institution</b>	<b>2002/03</b>	<b>2005/06</b>	<b>2006/07</b>	<b>Change from 2002/03</b>	<b>Change from 2005/06</b>
Bath Spa University	6.2%	3.6%	3.4%	-2.8%	-0.2%
The University of Bath	12.6%	14.4%	16.4%	3.8%	2.0%
The Arts Institute at Bournemouth	5.7%	3.5%	4.1%	-1.6%	0.6%
Bournemouth University	31.4%	28.3%	26.6%	-4.8%	-1.7%
The University of Bristol	1.9%	2.0%	2.0%	0.1%	0.0%
Dartington College of Arts	0.0%	0.0%	0.0%	0.0%	0.0%
The University of Exeter	6.6%	7.6%	7.4%	0.8%	-0.2%
University College Falmouth	1.2%	1.2%	1.4%	0.2%	0.2%
University of Gloucestershire	28.2%	25.6%	23.8%	-4.4%	-1.8%
The University of Plymouth	10.7%	12.5%	12.6%	1.9%	0.1%
Royal Agricultural College	42.1%	56.4%	62.2%	20.1%	5.8%
College of St Mark and St John	17.8%	2.0%	1.6%	-16.2%	-0.4%
University of the West of England	16.0%	12.8%	12.1%	-3.9%	-0.7%
South West	13.5%	12.5%	12.3%	-1.2%	-0.2%
National Total	10.6%	10.7%	10.8%	0.2%	0.1%

Source: HESA

**2.2 Qualifications obtained from South West HEIs in business, management & related programmes in Higher Education**

Figure 1 shows variations in numbers studying business, management and related programmes. There has been gradual growth in numbers of Finance and Accounting qualifications delivered by SW HEIs. The number of management qualifications had been steadily rising before a sudden drop in 2005/06 below the levels of 3 years earlier.

**Figure 1: Achievement of HE qualifications in business, management and related programmes, 2002/03 to 2006/07**



Source: HESA (HEIDI)

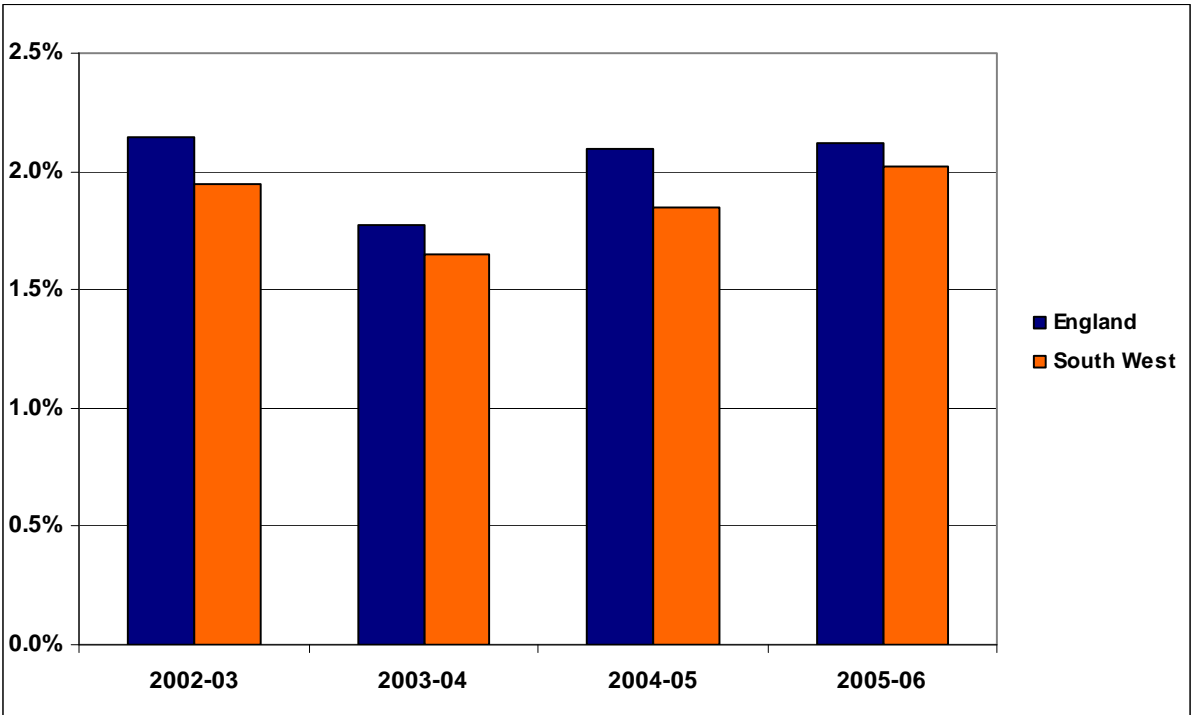
### 3 Enterprise Skills

#### 3.1 Business start-up rates

Figure 2 shows that the South West has experienced a net growth in its business stock for each of the last four years. The rate of growth has however consistently lagged behind the national average and the South West has frequently experienced one of the lowest regional business start up rates since 2002/3.

There was however some improvement in performance in the last year. During 2005/6 net change in VAT registrations in the region was +2.0%, only 0.1%, behind the England average of 2.1%. This was an improvement on 2005/6 when net change in VAT registrations was +1.8% in the region, 0.3% below the England average of +2.1%.

**Figure 2: Net change in VAT-registered business stock, 200/03 – 2005/06**



Source: VAT Registration Data (Nomis)

Although the net change in business stock has been positive, the number of VAT registrations as a proportion of the total business stock in the South West is lower than in any other region.

**Table 4: Registrations as % of business stock by region, 2003-2006**

	2003	2004	2005	2006
East	10.3%	9.6%	9.5%	9.1%
East Midlands	10.4%	9.8%	9.5%	9.4%
London	12.6%	12.2%	11.8%	11.5%
North East	10.9%	9.7%	9.9%	9.6%
North West	11.2%	10.4%	10.1%	9.9%
South East	10.8%	9.9%	9.6%	9.5%
<b>South West</b>	<b>9.8%</b>	<b>8.9%</b>	<b>8.6%</b>	<b>8.8%</b>
West Midlands	10.3%	9.7%	9.3%	9.1%
Yorkshire and The Humber	10.8%	9.9%	9.6%	9.4%
England	10.9%	10.2%	9.9%	9.7%

Source: VAT Registration Data (Nomis)

A feature in the South West is that the number of deregistrations is also low and business survival rates are high. While this stability within the business base is good, it could be interpreted as masking low levels of entrepreneurialism in the region.

The number of new VAT registrations in the region in 2006 was 15,745. This is no higher than in 2002 when there were 15,550 new VAT registrations, or in 2003 with 16,625 new registrations.

### 3.6 Expenditure on Research and Development

Another indicator of innovation activity is the level of expenditure on research and development by different sectors of the economy. In 2006, businesses spent some £1,316 million on R&D in the South West, around 9.2% of the UK total. Around three-quarters of all expenditure was in manufacturing – similar to nationally - with most of the remainder in services.

**Table 5: Expenditure on R&D performed in UK businesses, South West & UK, 2006 (£ million)**

Sector	South West	UK
Manufacturing	992	10,796
Services	312	3,322
Other	12	187
<b>Total</b>	<b>1,316</b>	<b>14,306</b>

Source: National Statistics, Business Monitor, MA14

Regional R&D expenditure grew by around 9.6%, from £1,201m in 2005. This rate of growth compares favourably against a national rate of 6.7% over the same period.

## 4. Innovation & Creativity

### 4.1 HE – Applications for STEM subject places HE

Using the UCAS subject areas to define STEM subjects, the overall number of applications for STEM subject places at South West Higher Education Institutions (HEIs) has risen by 21.3% between 2002 and 2007, as shown in Table 5. There was a significant increase in 2007, during which there were 8,349 more applications for STEM subject places to South West HEIs than 2006. The rate of growth in STEM subject applications has been faster than the rate of growth in applications for all subjects, which stood at 17.2%.

During the last year increases were seen in all subjects, except subjects allied to medicine. Applications to study Physical Sciences (which includes chemistry) increased by 14%, while figures prior to that, from 2002 to 2006, had been virtually static. Previous declines in applications for Biological Science places have been reversed and application numbers are now back to 2002 levels. Mathematical and computer sciences saw a 10% rise from 2006 to 2007, although this is not sufficient to offset previous declines and 2007 application to study Mathematical and Computer Sciences remain nearly 20% below 2002 levels.

**Table 5: Applications for HE places in STEM subjects at South West HEIs, 2002-2006**

<b>Subject</b>	<b>2002</b>	<b>2006</b>	<b>2007</b>	<b>Change 2002- 2006</b>	<b>Change 2006- 2007</b>	<b>% change 2002- 2007</b>
Medicine & Dentistry	3,268	5,873	7,409	2,605	1,536	126.70%
Subjects allied to Medicine	6,078	13,163	12,435	7,085	-728	104.60%
Biological Sciences	16,057	14,961	16,957	-1,096	1,996	5.60%
Veterinary Science, Agriculture & related	3,507	2,802	3,420	-705	618	-2.50%
Physical Sciences	8,902	8,952	10,216	50	1,264	14.80%
Mathematical & Computer Sciences	12,552	9,101	10,062	-3,451	961	-19.80%
Engineering	9,365	9,820	10,199	455	379	8.90%
Technologies	907	951	1,462	44	511	61.20%
Architecture, Building & Planning	2,437	2,992	3,585	555	593	47.10%
Combined sciences	3,262	3,251	3,732	-11	481	14.40%
Sciences combined w/ social sciences or arts	4,693	5,958	6,696	1,265	738	42.70%
<b>Total STEM entries</b>	<b>71,028</b>	<b>77,824</b>	<b>86,173</b>	<b>6,796</b>	<b>8,349</b>	<b>21.30%</b>
<b>All subjects</b>	<b>170,469</b>	<b>177,276</b>	<b>199,717</b>	<b>6,807</b>	<b>22,441</b>	<b>17.20%</b>

Source: UCAS

Note: Chemistry falls under 'Physical Sciences'.

### 4.2 HE – Acceptances to STEM subjects at HE

The number of STEM subject acceptances has increased by 18.1% in the South West between 2002 and 2007.

It is interesting that while the number of STEM applications increased faster than the all subject average, the number of STEM subject acceptances increased in line with the all subject average. This suggests that demand for STEM subject places in the region has grown at faster rate than regional supply.

No subjects showed a decline in acceptances in the last year, although the number of acceptances to study Mathematical and Computer Sciences is still 15% below 2002 levels. This is roughly in line with the % fall in the number of applications to study this subject.

It is notable however that Engineering acceptances are only 2.5% above 2002 levels while growth in the overall number of HEI places for all subjects has been 17.7%.

**Table 6: Acceptances for HE places in STEM subjects at South West HEIs as a percentage of all applications, 2002-2006**

<b>Subject</b>	<b>2002</b>	<b>2006</b>	<b>2007</b>	<b>Change 2002-2007</b>	<b>Change 2006-2007</b>	<b>% change 2002-2007</b>
Medicine & Dentistry	448	527	591	143	64	31.9%
Subjects allied to Medicine	1,084	1,769	1,768	684	-1	63.1%
Biological Sciences	2,389	2,797	2,951	562	154	23.5%
Veterinary Science, Agriculture & related	680	638	674	-6	36	-0.9%
Physical Sciences	1,491	1,660	1,794	303	134	20.3%
Mathematical & Computer Sciences	2,186	1,706	1,855	-331	149	-15.1%
Engineering	1,510	1,428	1,548	38	120	2.5%
Technologies	174	193	328	154	135	88.5%
Architecture, Building & Planning	480	600	777	297	177	61.9%
Combined sciences	650	704	768	118	64	18.2%
Sciences combined with social sciences or arts	1,075	1,174	1,313	238	139	22.1%
<b>Total STEM entries</b>	<b>12,167</b>	<b>13,196</b>	<b>14,367</b>	<b>2,200</b>	<b>1,171</b>	<b>18.1%</b>
<b>All subjects</b>	<b>28,549</b>	<b>30,973</b>	<b>33,613</b>	<b>5,064</b>	<b>2,640</b>	<b>17.7%</b>

Source: UCAS

Note: Chemistry falls under 'Physical Sciences'.

### 4.3 HE – Number of students studying STEM subjects

Data from HESA allows us to monitor the actual number of students studying STEM related subjects at HEIs within the South West. The subject listing in HESA is slightly different from UCAS data.

Table 7 shows that there were 63,595 students studying STEM subjects in the South West during 2006/07, up by 785 on 2005/6. The number of STEM students at SW HEIs has increased by 9.2% since 2002/03, compared to a 12.2% growth in STEM student numbers nationally.

This rate of growth in STEM student numbers is also slightly below the increase in the overall number of HE students in the region studying all subjects (11.7%). This is a reverse of the national picture, where the growth in STEM students (12.2%) has outstripped growth across all subjects (8.6%).

In the last year growth has been concentrated in Medicine and Dentistry, Biological and Physical sciences and Architecture, Building and Planning. The number of Engineering students has remained almost constant, while the strong downward trend in numbers studying Computer Science has continued.

**Table 7: STEM students at South West HEIs by subject, 2002/03 to 2005/06**

Subject	SW					UK
	2002/03	2005/06	2006/07	change 05/06-06/07	% change 02/03-06/07	% change 02/03-06/07
Medicine & dentistry	2,160	2,910	3,335	425	54.4%	29.3%
Subjects allied to medicine	15,360	18,480	17,635	-845	14.8%	12.9%
Biological sciences	8,565	10,680	11,355	675	32.6%	30.5%
Veterinary science	605	690	705	15	16.5%	26.8%
Agriculture & related subjects	2,345	2,185	2,200	15	-6.2%	7.4%
Physical sciences (incl. chemistry)	6,225	6,700	6,910	210	11.0%	18.1%
Mathematical sciences	1,835	2,145	2,265	120	23.4%	29.0%
Computer science	9,320	5,945	4,965	-980	-46.7%	-20.2%
Engineering & technology	8,645	8,655	8,780	125	1.6%	6.9%
Architecture, building & planning	3,160	4,420	5,445	1,025	72.3%	32.1%
<b>Total STEM Subjects</b>	<b>58,220</b>	<b>62,810</b>	<b>63,595</b>	<b>785</b>	<b>9.2%</b>	<b>12.2%</b>
<b>Total All Subjects</b>	<b>139,060</b>	<b>153,250</b>	<b>155,385</b>	<b>2,135</b>	<b>11.7%</b>	<b>8.6%</b>

Source: HESA

Looking at individual institutions, Table 8 shows that the biggest providers of STEM subjects are the Universities of the West of England, Plymouth and Bristol, each of which had over 10,000 students in 2006/07. Some providers have relatively few students.

**Table 8: STEM students at South West HEIs, 2002/03 to 2005/06**

HEI	2002/03	2005/06	2006/07	change 05/06-06/07	change 02/03-06/07	% change 02/03-06/07
Bath Spa University	825	675	675	0	-150	-18.2%
The University of Bath	7,470	7,930	7,755	-175	285	3.8%
Bournemouth University	6,165	6,335	6,695	360	530	8.6%
The University of Bristol	10,470	10,605	10,735	130	265	2.5%
The University of Exeter	3,420	4,355	4,665	310	1,245	36.4%
University of Gloucestershire	2,905	2,470	2,050	-420	-855	-29.4%
The University of Plymouth	13,735	14,550	14,455	-95	720	5.2%
Royal Agricultural College	420	360	340	-20	-80	-19.0%
College of St Mark and St John	555	675	725	50	170	30.6%
University of the West of England	12,240	14,855	15,500	645	3,260	26.6%
<b>Total</b>	<b>58,220</b>	<b>62,810</b>	<b>63,595</b>	<b>785</b>	<b>5,375</b>	<b>9.2%</b>

Source: HESA

Most of the region's HEIs have seen growth in STEM student numbers since 2002/3, the exceptions being the Royal Agricultural College, Bath Spa University, and the University of Gloucestershire.

In the last 12 months the number of STEM students rose by 785, with rises concentrated at the Universities of Bournemouth, Exeter and UWE.

Table 9 looks at how STEM provision is concentrated at different SW HEIs. The University of Bath and UWE are the only two providers where STEM students account for more than half of all students. There is a significant range between the HEIs, down to under 10% of students at Bath Spa University. At 40.3%, the South West as a whole is comparable to the national average of 39.3%.

**Table 9: STEM Students as a percentage of all students by South West HEIs, 2002/03 – 2005/06**

HEI	2002/03	2005/06	2006/07	Change 05/06- 06/07	Change 02/03- 06/07
Bath Spa University	17.5%	10.2%	9.5%	-0.7%	-8.0%
The University of Bath	54.3%	53.6%	54.4%	0.8%	0.1%
Bournemouth University	41.3%	36.8%	37.5%	0.7%	-3.9%
The University of Bristol	47.2%	44.9%	47.1%	2.2%	-0.1%
The University of Exeter	26.0%	29.8%	29.7%	-0.1%	3.7%
University of Gloucestershire	31.5%	28.4%	23.4%	-5.0%	-8.1%
The University of Plymouth	50.8%	48.9%	47.3%	-1.6%	-3.5%
Royal Agricultural College	57.9%	43.6%	37.8%	-5.8%	-20.2%
College of St Mark and St John	11.7%	18.0%	20.9%	2.9%	9.2%
University of the West of England	48.4%	51.5%	52.1%	0.6%	3.7%
<b>South West Total</b>	<b>41.9%</b>	<b>41.0%</b>	<b>40.3%</b>	<b>-0.7%</b>	<b>-1.5%</b>
<b>UK</b>	<b>39.9%</b>	<b>41.7%</b>	<b>39.3%</b>	<b>-2.4%</b>	<b>-0.6%</b>

Source: HESA

The proportion of all students studying STEM subjects at SW HEIs fell from 41% to 40.3% in the last year. This is a continuation and slight acceleration of a longer-term decline, since 2002/03. It is not spread uniformly across all HEIs.

#### 4.4 HE – Achievements in STEM subjects

Table 10 shows that the growth in overall STEM student numbers in the South West (9.2% from 02/03 to 06/07) flows through into growth in rates of achievement, which have risen by 14.4% over the same period. That said, this regional increase, 14.4%, is significantly below the 21.7% national increase in achievements in STEM subjects in the same period.

Between 2005/06 and 2006/07 the number of STEM achievements fell by 300. Clearly achievements, which primarily occur at the end of a period of study, lag behind changes in acceptances and numbers of students studying STEM subjects. We would hope and expect increases over the last year in numbers accepted onto STEM subjects (up by 1,171) and numbers studying STEM subjects (up by 785) to feed into achievements in future years.

**Table 10: STEM Achievements at South West HEIs by subject, 2002/03 to 2005/06**

Subject	SW					UK
	2002/03	2005/06	2006/07	change 05/06- 06/07	% change 02/03- 06/07	% change 02/03- 06/07
Medicine & dentistry	365	415	515	100	41.1%	41.1%
Subjects allied to medicine	2,940	3,955	3,505	-450	19.2%	33.6%
Biological sciences	2,315	2,940	3,100	160	33.9%	31.3%
Veterinary science	95	125	130	5	36.8%	11.3%
Agriculture & related subjects	615	645	705	60	14.6%	4.2%
Physical sciences	1,560	1,725	1,635	-90	4.8%	10.5%
Mathematical sciences	490	535	595	60	21.4%	27.7%
Computer science	1,840	1,755	1,480	-275	-19.6%	-6.9%
Engineering & technology	1,935	2,010	1,985	-25	2.6%	15.6%
Architecture, building & planning	665	865	1,020	155	53.4%	35.7%
<b>Total</b>	<b>12,820</b>	<b>14,970</b>	<b>14,670</b>	<b>-300</b>	<b>14.4%</b>	<b>21.7%</b>

Source: HESA

## 5. Higher Level Skills

### 5.1 Foundation Degrees - Achievements & Participation

Patterns of growth in the achievement of foundation degrees has continued in 2006/07, but at a slower rate to previous years.

1,900 Foundation Degrees were achieved in 2006/07 at HEIs in the South West, up from 1,740 in the previous year.

**Table 11: Foundation Degree Achievements, South West and UK, 2002/03 – 2005/06**

Region	2002/03	2003/04	2004/05	2005/06	2006/07
South West	190	480	1,020	1,740	1,900
UK	1,095	3,130	6,195	9,290	11,625

Source: HESA

## 6. Sub-Priorities

### 6.1 Young people not in education, employment or training (NEETs)

Data on the proportion of young people not in education, employment or training (NEETs) is published annually by the DCSF. Data for 2007 shows that 5.5% of 16-18 years olds in the South West were NEET. The number of NEETs is estimated to have fallen by 1,100 since 2006 when 9,700 young people were NEET.

The proportion of young people who are NEET in the South West remains below the national average of 6.7%, although the national rate of decline is faster than that in the South West region.

There are however significant variations in the level of NEETs across the region, with several of the region's urban areas having much higher levels of NEETs than average.

**Table 12: NEETs by local authority, 2004-2006**

Local Education Authority	2007		2006	% point change
	Estimated number	%	%	since 2006
Bournemouth	380	8.4%	8.5%	-0.1%
Dorset	640	5.5%	6.8%	-1.3%
Poole	290	5.8%	6.2%	-0.4%
Cornwall & Isles of Scilly	980	5.8%	6.1%	-0.3%
Devon	1,200	5.9%	6.0%	-0.1%
Plymouth	640	6.8%	7.4%	-0.6%
Torbay	250	4.7%	6.8%	-2.1%
Gloucestershire	780	4.0%	4.6%	-0.6%
Somerset	590	4.3%	4.8%	-0.5%
Bath & North East Somerset	230	3.9%	4.2%	-0.3%
Bristol	860	7.3%	7.8%	-0.5%
North Somerset	230	4.3%	4.8%	-0.5%
South Gloucestershire	380	4.3%	5.0%	-0.7%
Swindon	430	6.2%	8.3%	-2.1%
Wiltshire	700	5.8%	6.0%	-0.2%
<b>South West</b>	<b>8,590</b>	<b>5.5%</b>	<b>6.0%</b>	<b>-0.5%</b>
<b>England</b>	<b>109,300</b>	<b>6.7%</b>	<b>7.7%</b>	<b>-1.0%</b>

Source: DCSF via Connexions Partnerships

The proportion of young people in the South West whose destinations were not known, and who are thought to be frequently NEET, fell from 3.6% in 2006 to 3.3% in 2007.

Ben Neild  
SLIM

July 2008