

**Progress Monitoring Report
on the delivery of
SW Regional Skills Partnership Priorities**

Report to

South West RSP

Produced by Crews Associates on behalf of SLIM

December 2008

Contents

- 1 Introduction
 - 1.1 Context
- 3 Enterprise Skills
 - 3.1 Business start-up rates
- 4. Creativity and Innovation Skills
 - 4.3 GCSE achievement of 15 year old pupils
- 6 Sub-Priorities
 - 6.1 Number of National Insurance Number Registrations

List of Tables

Table 1: Registrations as % of business stock by region, 2002-2007	3
Table 2: Achievement of 5+ GCSEs at grades A*-C, 2004-2008, by South West local authority	5
Table 3: Achievement of 5+ GCSEs at grades A*-C including English & Maths, 2004-2008, by South West local authority	7
Table 4: National Insurance Number Registrations 2004/05-2007/08, non-UK Nationals only (thousands).....	8
Table 5: Most Popular Locations for NINo Registrations, 2007/08	8

List of Figures

Figure 1: Net change in VAT-registered business stock, 2001/02 – 2006/07	2
Figure 2: Achievement of 5+ GCSEs at grades A*-C, South West and England, 2004-2008.....	3
Figure 3: Achievement of 5+ GCSEs at grades A*-C including English and Maths, South West and England, 2005-2008	6

1 Introduction

1.1 Context

At the request of the RSP Board, SLIM has developed a Performance Monitoring Framework, containing a number of indicators that can be used to assess progress in the delivery of RSP priorities. The report contains data for all indicators under each of the four main priorities and three 'sub-priorities', which are:

Priorities

- Leadership & Management Skills
- Enterprise Skills
- Creativity and Innovation Skills, including Science, Technology, Engineering & Maths (STEM) skills
- Ensuring skills needs of the regional economy, and in key sectors, are addressed at Level 3 and above

Sub-Priorities

- Supporting strategies for the integration of migrant workers
- Supporting the development of integrated information, advice and guidance service
- Supporting strategies for the reduction of NEETS

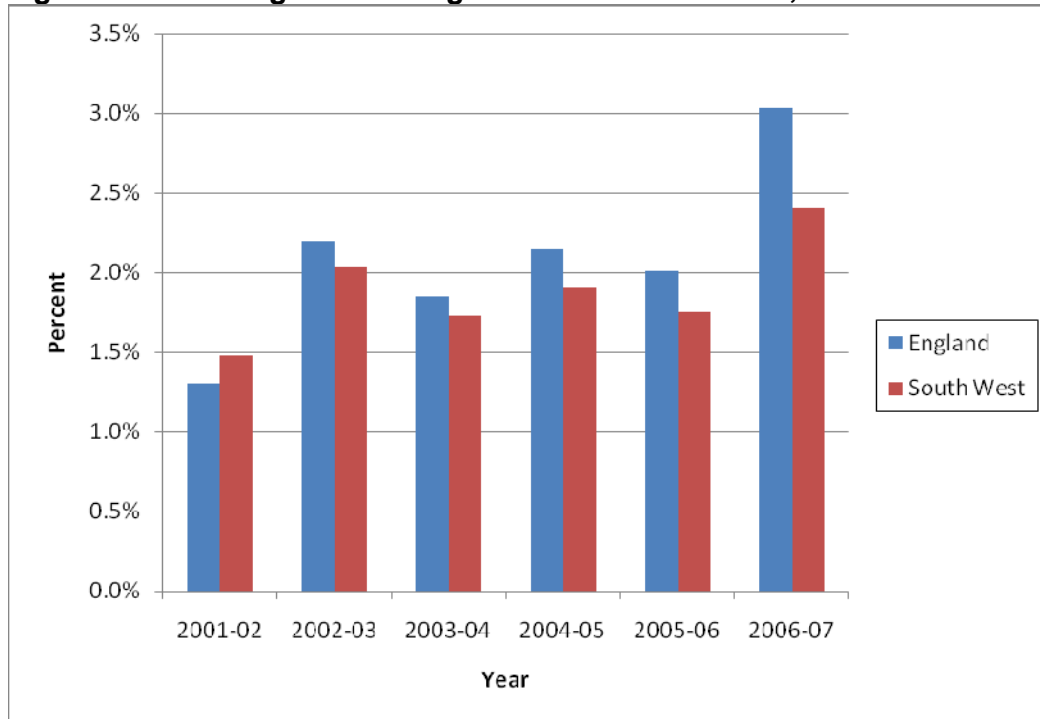
3 Enterprise Skills

3.1 Business start-up rates

Figure 1 shows that the South West has experienced a net growth in its business stock for each of the last six years, although the rate of growth has consistently lagged behind the national average for the last five years. The South West has frequently experienced one of the lowest regional business start-up rates since 2002/03.

There was however some improvement in performance in the last year. From 2006 to 2007 net change in the stock of VAT registered businesses in the region was 2.4%, the highest rate in recent years. However, the gap with the average for England has widened from 0.3% in 2005/06 to 0.6% in 2006/07.

Figure 1: Net change in VAT-registered business stock, 2001/02 – 2006/07



Source: VAT Registration Data (Nomis)

Although the net change in business stock has been positive, the number of VAT registrations as a proportion of the total business stock in the South West is lower than in any other region (see Table 1).

Table 1: Registrations as % of business stock by region, 2002-2007

	2002	2003	2004	2005	2006	2007
East	9.8%	10.2%	9.5%	9.4%	8.9%	9.9%
East Midlands	9.8%	10.4%	9.8%	9.5%	9.3%	9.8%
London	11.6%	12.5%	12.1%	11.8%	11.6%	13.4%
North East	9.8%	10.8%	9.7%	9.9%	9.6%	11.5%
North West	10.2%	11.1%	10.2%	10.0%	9.8%	10.9%
South East	10.1%	10.7%	9.8%	9.6%	9.4%	10.3%
South West	9.2%	9.7%	8.8%	8.5%	8.5%	9.1%
West Midlands	9.6%	10.3%	9.7%	9.4%	9.2%	9.6%
Yorkshire & the Humber	9.7%	10.7%	9.9%	9.5%	9.2%	10.3%
England	10.1%	10.8%	10.1%	9.9%	9.6%	10.7%

Source: VAT Registration Data (Nomis)

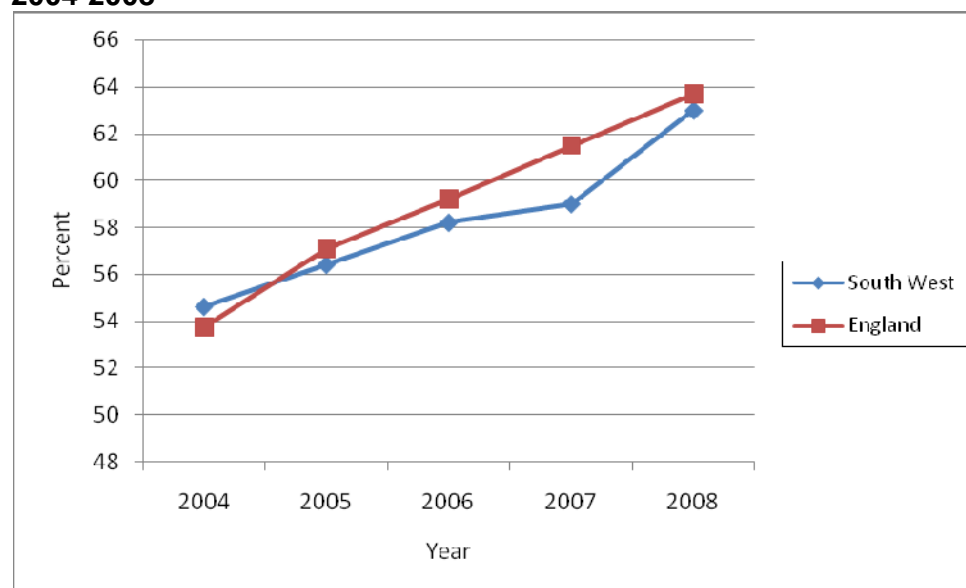
The number of new VAT registrations in the region in 2007 was 17,020. This is the highest recorded level since the turn of the millennium and is around 1,500 higher than in 2006.

4. Creativity and Innovation Skills

4.3 GCSE achievement of 15 year old pupils

As shown in Figure 2, the South West lags slightly behind the national average in terms of GCSE achievements. Although the proportion of pupils achieving 5 or more GCSEs at grades A*-C has improved year on year (to 63% in 2008), the rate of improvement has been slower than nationally. This slower rate of improvement has seen the region's performance drop from second best in England in 2004 (out of nine regions), to seventh in 2008.

Figure 2: Achievement of 5+ GCSEs at grades A*-C, South West and England, 2004-2008



Source: DCSF

As the South West's position relative to the national average has declined over the last five years, it may be worth investigating further any local effects that have contributed to this trend. Table 2 shows each local authority's results for 2004 to 2008, and shows that the majority have actually shown positive growth in the proportion achieving 5+ A*-C grades at GCSE, both over the last year and the last five. The only exceptions are the Isles of Scilly (where there are very few students) and Swindon.

In previous years, Bristol has consistently been the worst performing local authority on this measure. However, significant improvements in recent years have resulted in Swindon being the worst performer in 2008, where just 52.5% of pupils achieved this standard, the second worst performing local authority in England.

With the majority of local authorities improving on this measure in absolute terms, the South West's decline relative to the national average has been caused by slower improvement in the region compared to England as a whole. Table 2 also shows that over the last five years, the majority of the region's local authorities have experienced slower than average growth on this measure, with the only exceptions being Bristol, Plymouth and South Gloucestershire (three of worst performing authorities in 2004).

Excluding the Isles of Scilly, where there are very few students, the biggest declines relative to the national average have been in Poole, Somerset, Gloucestershire and Cornwall.

Between 2007 and 2008, a slightly better year for the South West as a whole, around half of the region's local authorities saw lower than average growth.

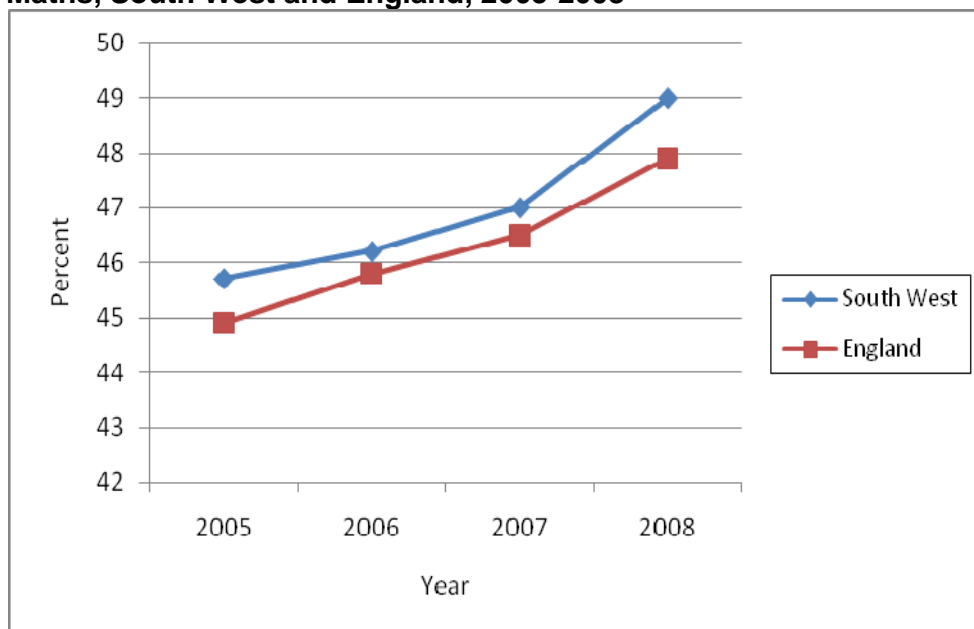
Table 2: Achievement of 5+ GCSEs at grades A*-C, 2004-2008, by South West local authority

Local Authority	Year					Change	
	2004	2005	2006	2007	2008	2004-2008	2007-2008
Bath & NE Somerset	60.2	63.5	66.9	65.7	69.3	9.1	3.6
Bristol	35.1	36.5	43.8	46.5	54.0	18.9	7.5
North Somerset	55.0	57.4	58.4	59.5	63.2	8.2	3.7
South Gos	50.0	55.5	54.9	55.9	62.9	12.9	7.0
Cornwall	54.7	55.9	57.3	57.9	60.5	5.8	2.6
Isles of Scilly	92.9	82.6	85.2	88.2	87.0	-5.9	-1.2
Torbay	53.1	53.4	54.2	59.7	62.1	9.0	2.4
City of Plymouth	51.8	55.1	59.8	59.5	66.2	14.4	6.7
Devon	54.9	55.9	58.0	57.0	63.0	8.1	6.0
Bournemouth	53.8	52.0	54.7	58.4	63.7	9.9	5.3
Poole	62.2	63.8	63.1	65.9	66.5	4.3	0.6
Dorset	59.0	60.8	62.2	63.3	66.7	7.7	3.4
Gloucestershire	60.9	62.8	63.9	64.2	67.4	6.5	3.2
Somerset	56.4	56.6	56.6	58.1	60.2	3.8	2.1
Swindon	46.4	50.3	53.5	53.5	52.5	6.1	-1.0
Wiltshire	56.6	58.2	58.2	59.2	64.7	8.1	5.5
England Average	53.7	57.1	59.2	61.5	64.6	10.9	3.1
Indexed (England = 100)							
	2004	2005	2006	2007	2008	Change	
	2004	2005	2006	2007	2008	2004-08	2007-08
Bath & NE Somerset	112.0	111.2	113.0	106.8	107.3	-4.8	0.4
Bristol	65.3	63.9	74.0	75.6	83.6	18.3	8.0
North Somerset	102.4	100.5	98.6	96.7	97.8	-4.5	1.1
South Gos	93.1	97.2	92.7	90.9	97.4	4.3	6.5
Cornwall	101.8	97.9	96.8	94.1	93.7	-8.1	-0.5
Isles of Scilly	172.9	144.7	143.9	143.4	134.7	-38.2	-8.7
Torbay	98.8	93.5	91.6	97.1	96.1	-2.7	-0.9
City of Plymouth	96.4	96.5	101.0	96.7	102.5	6.1	5.7
Devon	102.2	97.9	98.0	92.7	97.5	-4.7	4.8
Bournemouth	100.1	91.1	92.4	95.0	98.6	-1.5	3.6
Poole	115.8	111.7	106.6	107.2	102.9	-12.8	-4.2
Dorset	109.8	106.5	105.1	102.9	103.3	-6.6	0.3
Gloucestershire	113.3	110.0	107.9	104.4	104.3	-9.0	-0.1
Somerset	105.0	99.1	95.6	94.5	93.2	-11.8	-1.3
Swindon	86.4	88.1	90.4	87.0	81.3	-5.1	-5.7
Wiltshire	105.3	101.9	98.3	96.3	100.2	-5.2	3.9
England Average	100.0	100.0	100.0	100.0	100.0	0.0	0.0

Source: DCSF

Taking into account the achievement of good GCSE grades including the key subjects of English and Maths, the South West slightly outperforms the national average, with 49% of pupils achieving 5 or more GCSEs at grades A*-C including both English and Maths in 2008 (see Figure 3). Since this measure was introduced in 2005, there has been year on year improvement in the South West, at a similar rate to nationally.

Figure 3: Achievement of 5+ GCSEs at grades A*-C including English and Maths, South West and England, 2005-2008



Source: DCSF

Within the region, Bristol is the worst performing area. Only 34.9% achieved this measure locally in 2008, five percentage points lower than the second worst performing local authority (Swindon). Over recent years, the majority of local authorities have seen improvement on this measure, although some have improved relatively slowly compared to the national average, i.e.

- Cornwall
- Isles of Scilly
- Torbay
- Poole
- Somerset
- Swindon

Table 3: Achievement of 5+ GCSEs at grades A*-C including English & Maths, 2004-2008, by South West local authority

Local Authority	Year				Change	
	2005	2006	2007	2008	2005-2008	2007-2008
Bath & NE Somerset	50.4	52	50.5	57.1	6.7	6.6
Bristol	28.2	30.4	31.4	34.9	6.7	3.5
North Somerset	46.8	47.4	48.1	50.1	3.3	2.0
South Gloucestershire	43.6	44.4	45.2	47.8	4.2	2.6
Cornwall	44.3	43.9	43.8	43.3	-1.0	-0.5
Isles of Scilly	82.6	77.8	64.7	69.6	-13.0	4.9
Torbay	45.8	45.5	49.9	47.6	1.8	-2.3
City of Plymouth	41.9	42.5	43.9	46.1	4.2	2.2
Devon	44.7	46.2	46.5	49.3	4.6	2.8
Bournemouth	42.9	43.6	48	48.6	5.7	0.6
Poole	53.8	52	54.5	56.4	2.6	1.9
Dorset	49.8	50	49.7	53.1	3.3	3.4
Gloucestershire	52.6	53.8	54.1	56.6	4.0	2.5
Somerset	45.9	44.4	46.6	46.5	0.6	-0.1
Swindon	38.2	40.7	41.1	39.9	1.7	-1.2
Wiltshire	49.4	48.5	49.4	53	3.6	3.6
England	44.9	45.8	46.5	47.2	2.3	0.7
Index (England = 100)						
Local Authority	Year				Change	
	2005	2006	2007	2008	2005-2008	2007-2008
Bath & NE Somerset	112.2	113.5	108.6	121.0	8.7	12.4
Bristol	62.8	66.4	67.5	73.9	11.1	6.4
North Somerset	104.2	103.5	103.4	106.1	1.9	2.7
South Gloucestershire	97.1	96.9	97.2	101.3	4.2	4.1
Cornwall	98.7	95.9	94.2	91.7	-6.9	-2.5
Isles of Scilly	184.0	169.9	139.1	147.5	-36.5	8.3
Torbay	102.0	99.3	107.3	100.8	-1.2	-6.5
City of Plymouth	93.3	92.8	94.4	97.7	4.4	3.3
Devon	99.6	100.9	100.0	104.4	4.9	4.4
Bournemouth	95.5	95.2	103.2	103.0	7.4	-0.3
Poole	119.8	113.5	117.2	119.5	-0.3	2.3
Dorset	110.9	109.2	106.9	112.5	1.6	5.6
Gloucestershire	117.1	117.5	116.3	119.9	2.8	3.6
Somerset	102.2	96.9	100.2	98.5	-3.7	-1.7
Swindon	85.1	88.9	88.4	84.5	-0.5	-3.9
Wiltshire	110.0	105.9	106.2	112.3	2.3	6.1
England	100.0	100.0	100.0	100.0	0.0	0.0

Source: DCSF

6 Sub-Priorities

6.1 Number of National Insurance Number Registrations

Table 4 shows that just over 733,000 non-UK nationals registered for a National Insurance number in the UK in 2007/08. Since 2004/05 there has been a year on year increase in the number of new registrations, an increase of 68.4% to 2007/08.

There were nearly 39,000 new registrations in the South West in 2007/08, some 5.3% of all registrations in the UK. This represents an increase of 72.1% from 2004/05 levels, higher than the increase nationally. However, the number of new NINOs in 2007/08 fell by around 2,300 from the previous year (5.6%), which suggests that the flows of migrant workers into the region may have already peaked and are now starting to fall.

At this point, it is worth restating the fact that NINo registrations only represent the first location of a migrant worker and does not track any subsequent movements to other parts of the UK. This factor limits their utility for geographic tracking or mapping purposes. In Cornwall, for instance, existing and long-standing linkages with seasonal work in Lincolnshire could explain lower NINo numbers in districts above for mobile workers.

Table 4: National Insurance Number Registrations 2004/05-2007/08, non-UK Nationals only (thousands)

Area	2004/05	2005/06	2006/07	2007/08	Change 0405-0708	% change 0405-0708
UK	435.4	663.1	705.8	733.1	297.7	68.4%
South West	22.6	34.1	41.2	38.9	16.3	72.1%

Source: DWP NINo Registration Data

Concentrations within the South West

In terms of locations within the region that migrant workers are registering for NINos, Table 5 indicates a clear concentration in urban areas, with 8 of the 10 most popular areas being largely urban in nature. This is as would be expected, given the greater supply of both jobs and housing in the region's main conurbations. Bristol is by far the most popular location, with more than 1 in 6 new registrations.

Table 5: Most Popular Locations for NINo Registrations, 2007/08

Local Authority	Total NINo Registrations 2007/08	% of South West total
Bristol, City of	6,450	16.6%
Bournemouth	4,200	10.8%
Swindon	2,750	7.1%
Plymouth	2,270	5.8%
Bath and North East Somerset	1,470	3.8%
South Gloucestershire	1,440	3.7%
Cheltenham	1,320	3.4%
Exeter	1,250	3.2%
Gloucester	1,180	3.0%
North Somerset	1,140	2.9%

Source: NINo Registration Data